

PALS MEGACODE - Tachyarrhythmia

An 11-year-old boy is brought into the ER for heart palpitations, shortness of breath and feeling fatigued.

1. Evaluates/assesses airway, breathing, and circulation. (*Patient appears sluggish but answers questions, increased respiratory effort and nasal flaring, cool skin.*)
2. Performs immediate interventions: maintain airway, place cardiac monitor, BP cuff, pulse ox, give supplemental oxygen, start IV, ECG.

Patient's vital signs: HR- 210 bpm, BP- 84/62, RR- 30/min, spO₂- 91%. The rhythm on the cardiac monitor shows the following:

3. Show examinee rhythm strip for SVT; Ask examinee to identify between wide or narrow QRS.
4. Have examinee identify between sinus tachycardia and SVT.
5. Have examinee identify between stable or unstable.

Patient is in SVT with poor perfusion. Cardioversion is not immediately available. What interventions will you attempt first?

6. Attempt vagal maneuvers first. (*Vagal maneuvers unsuccessful*)
7. Administers adenosine. Verbalizes correct initial dose- 0.1 mg/kg, max 6mg. (*No change in patient condition after initial dose*)
8. Administers second dose adenosine, verbalizes 0.2 mg/kg, max 12 mg. (*Adenosine is ineffective*)
9. Performs synchronized cardioversion. Verbalizes correct dose 0.5-1 J/Kg

Patient has converted back to normal sinus rhythm

10. Reassesses/ monitors patient cardiopulmonary status. Evaluate for signs of heart failure, ECG, orders lab tests, etc.

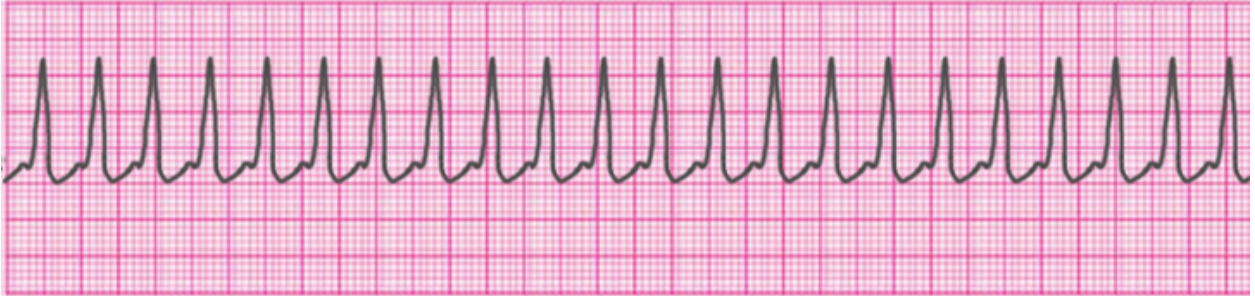
PALS Skills Verification Checklist - Tachyarrhythmia

Skill Tested	Completed	
	Yes	No
Initial assessment: airway, breathing and circulation		
Initiates appropriate interventions for tachyarrhythmia: Maintains airway, provides supplemental oxygen, places cardiac monitor, pulse ox, BP cuff, initiates IV, ECG		
Correctly identifies narrow QRS		
Correctly distinguishes between sinus tachycardia and SVT		
Correctly distinguishes between stable or unstable SVT		
Performs vagal maneuvers		
Administers adenosine, verbalizes correct doses. 1 st dose: .01mg/kg (6mg max) 2 nd dose: 0.2 mg/kg (12mg max)		
Performs cardioversion, verbalizes correct dose 0.5-1 J/Kg		
Reassesses/ monitors patient status post-conversion.		

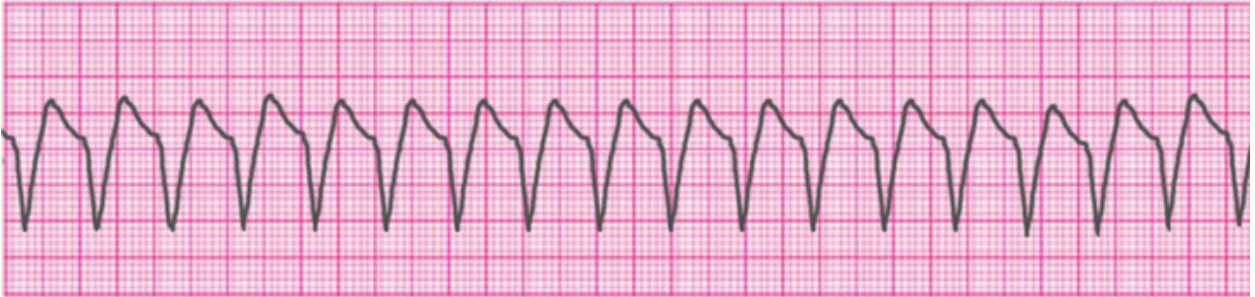
MEGACODE RHYTHM STRIPS

(Key is on the next page.)

1.



2.



3.



MEGACODE RHYTHM STRIPS KEY:

1. Supraventricular Tachycardia (SVT)
2. Ventricular Tachycardia – Monomorphic (VT)
3. Sinus Bradycardia